



MONTHLY MEMBERSHIP PROGRESS REPORT

District 14 M

Results as of: 06/30/2019

GMT: CINDY GREGG

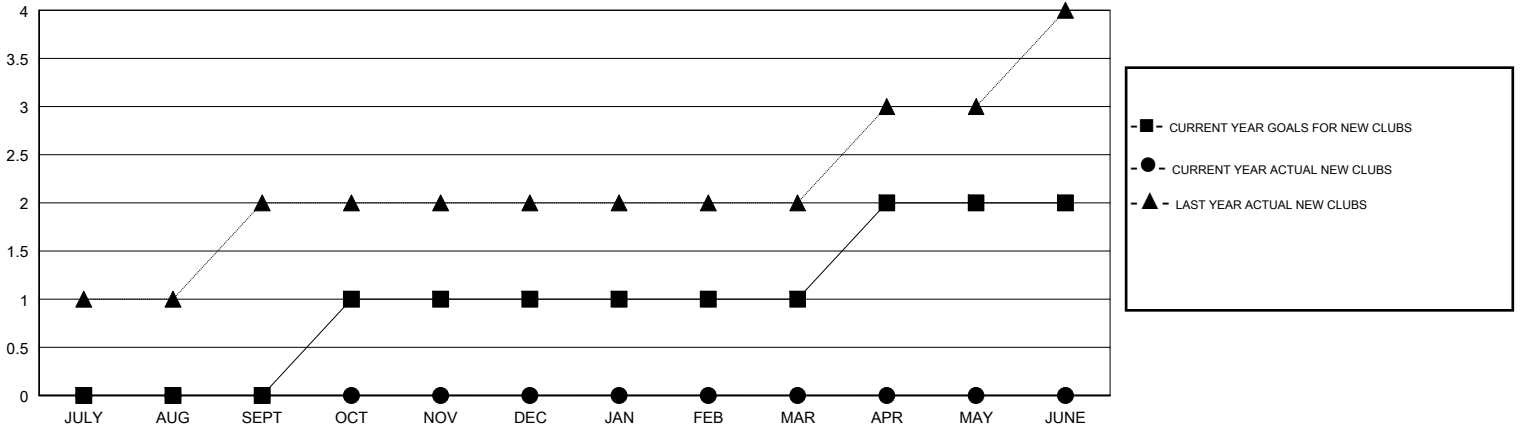
LOCATION PENNSYLVANIA

GMT CA

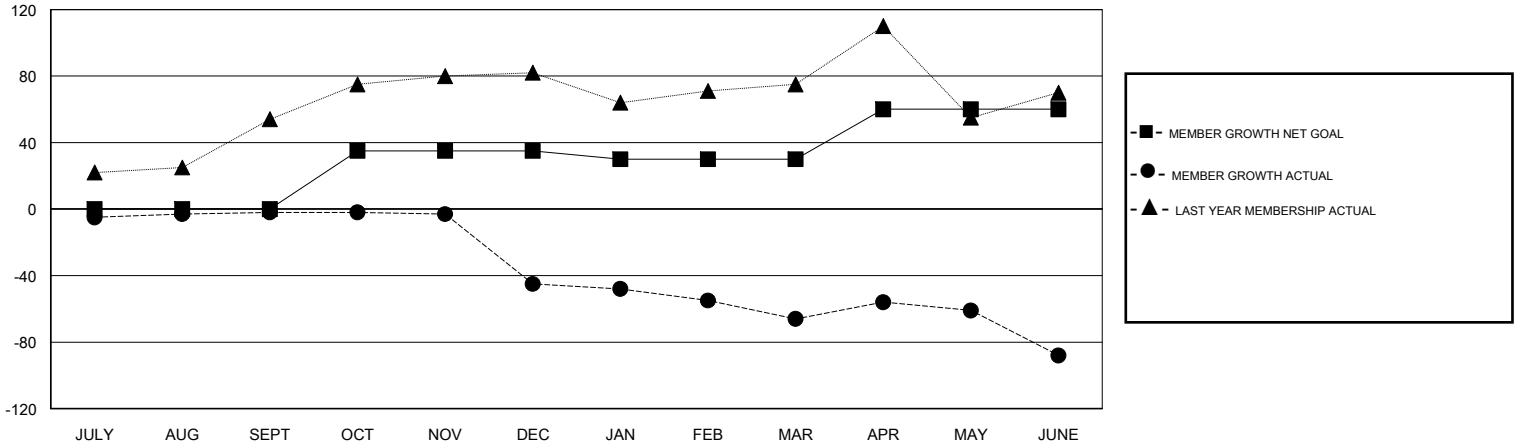
Clubs			
RESULTS FOR 2018-2019			
QUARTER	NEW CLUB GOAL	NEW CLUBS	DROPPED CLUBS
JULY/AUG/SEPT	0	0	0
OCT/NOV/DEC	1	0	1
JAN/FEB/MAR	0	0	1
APR/MAY/JUNE	1	0	1

Members			
RESULTS FOR 2018-2019			
QUARTER	MEMBER GROWTH NET GOAL	MEMBER GROWTH ACTUAL	DROPPED MEMBERS ACTUAL (including transfers)
JULY/AUG/SEPT	0	21	20
OCT/NOV/DEC	35	17	60
JAN/FEB/MAR	-5	28	43
APR/MAY/JUNE	30	32	54

GOALS AND ACTUAL NEW CLUBS CUMULATIVE



GOALS AND ACTUAL MEMBERS CUMULATIVE



DROPPED CLUBS: 3	25 CLUBS OF 47 ADDED 1 OR MORE NEW MEMBERS	<u>GENDER DISTRIBUTION</u> MALE 763 (69.81%) FEMALE 330 (30.19%) Women Percentage Fiscal Year Goal: 32%
<u>DROPPED MEMBERS</u> DECEASED 21 CLUB CANCELLED 31 OTHER 125 TOTAL 177	CLICK HERE FOR CUMULATIVE MEMBERSHIP DATA	TOTAL FAMILY UNIT MEMBERS 221 FAMILY MEMBERS PAYING HALF DUES 116